

# U CHANNEL

Specification:	BS 6946:1988
Finishing:	hot dip galvanized to ISO 1461:1999

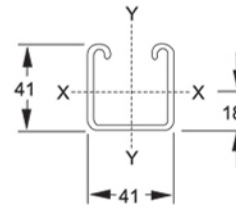
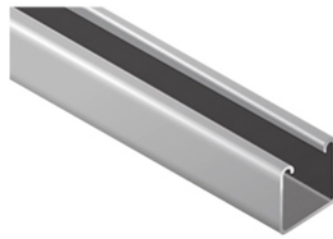
## Plain Channel 41 x 41

DR41

Item No.

M69461426 (6 meter long)

M69461423 (3 meter long)



Span or column unsupported Height in mm	Uniform Load at 175 N/mm <sup>2</sup> Stress.kg	Deflection in mm at 175 N/mm <sup>2</sup>	Uniform Load at Max. Deflec. Of 1/200th. Span. Kg	Uniform load at Max. Deflec. Of 1/360th. Span. Kg	Max. Load of column loaded @ Centroid kg	Max. Load of column loaded @ slot face kg
500	884	0.95	-	-	5379	1650
1000	442	3.82	-	321	3373	1395
1500	294	8.60	257	142	2020	1093
2000	221	15.29	144	80	1395	879
2500	176	23.89	92	51	1044	725
3000	147	34.40	64	35	(816)	(607)

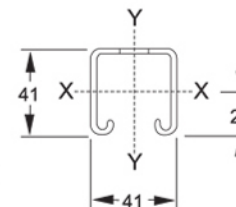
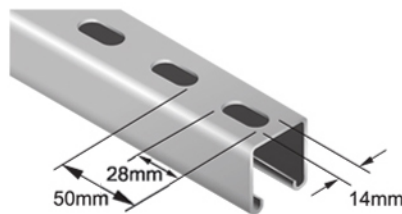
## Slotted Channel 41 x 41

DR41S

Item No.

M69462426 (6 meter long)

M69462423 (3 meter long)



Span or column unsupported Height in mm	Uniform Load at 175 N/mm <sup>2</sup> Stress.kg	Deflection in mm at 175 N/mm <sup>2</sup>	Uniform Load at Max. Deflec. Of 1/200th. Span. Kg	Uniform load at Max. Deflec. Of 1/360th. Span. Kg	Max. Load of column loaded @ Centroid kg	Max. Load of column loaded @ slot face kg
500	819	1.05	-	-	5100	1635
1000	409	4.18	-	271	3284	1389
1500	273	9.41	217	120	1899	1062
2000	204	16.73	122	67	1297	843
2500	163	26.15	78	43	970	691
3000	136	37.65	54	30	(761)	(578)

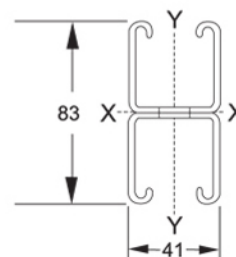
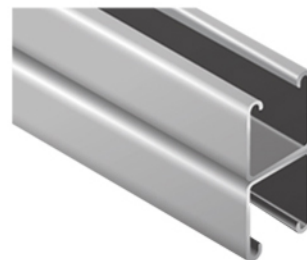
## Combination Channel

DR41D

Item No.

M69463426 (6 meter long)

M69463423 (3 meter long)



Span or column unsupported Height in mm	Uniform Load at 175 N/mm <sup>2</sup> Stress.kg	Deflection in mm at 175 N/mm <sup>2</sup>	Uniform Load at Max. Deflec. Of 1/200th. Span. Kg	Uniform load at Max. Deflec. Of 1/360th. Span. Kg	Max. Load of column loaded @ Centroid kg	Max. Load of column loaded @ slot face kg
500	-	-	-	-	11682	2864
1000	1253	2.15	-	-	10451	2783
1500	835	4.84	-	718	7790	2551
2000	626	8.61	-	404	5068	2170
2500	501	13.45	465	258	3410	1796
3000	417	19.37	323	179	(2427)	(1480)

Grade 304 & 316 Stainless Steel and special length available on request